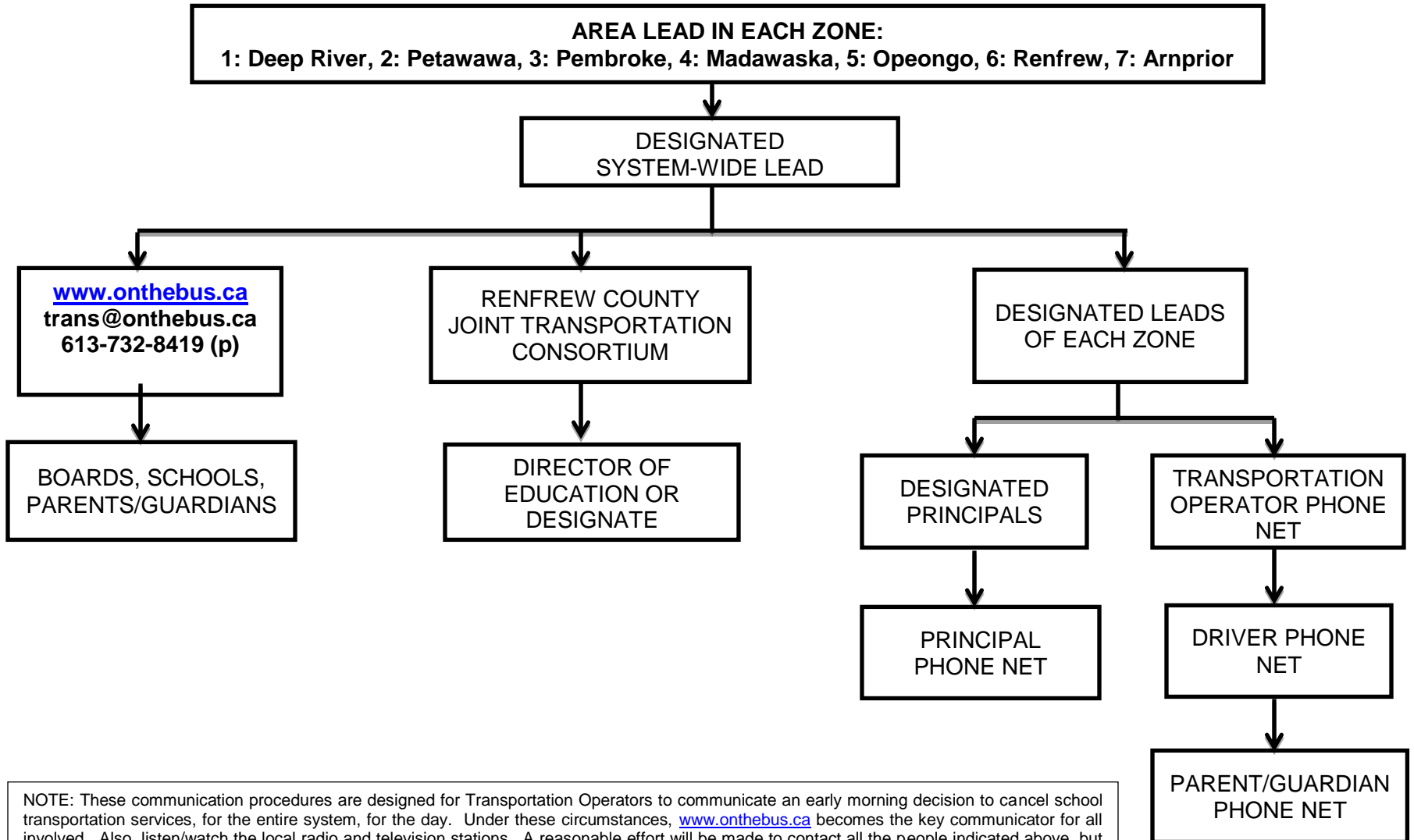


COMMUNICATION PROCEDURES FOR SYSTEM WIDE TRANSPORTATION CANCELLATIONS



NOTE: These communication procedures are designed for Transportation Operators to communicate an early morning decision to cancel school transportation services, for the entire system, for the day. Under these circumstances, www.onthebus.ca becomes the key communicator for all involved. Also, listen/watch the local radio and television stations. A reasonable effort will be made to contact all the people indicated above, but due to time constraints and emergency circumstances beyond everyone's control, some people may be missed. For these reasons, the contact of area parents by drivers is optional, although encouraged whenever possible.