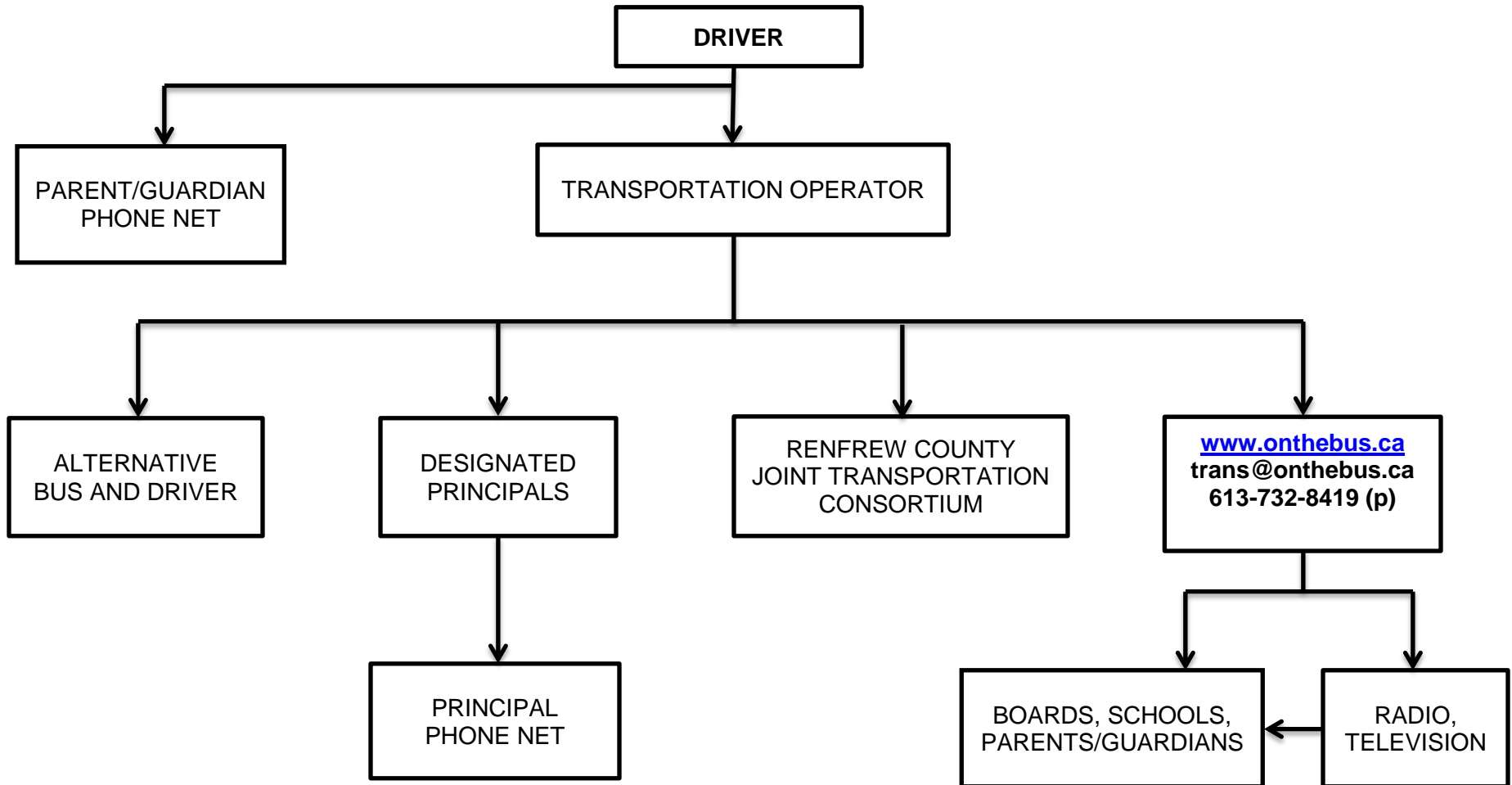


COMMUNICATION PROCEDURES FOR INDIVIDUAL VEHICLE BREAKDOWN



NOTE: These communication procedures are designed for drivers who run into difficulty, prior to starting/during the route, resulting in a vehicle breakdown. The driver shall contact the parents/guardians of pupils on the route via the pre-established parent/guardian phone net to advise of the breakdown (if the driver is not able to do so, this then becomes the responsibility of the transportation operator). The transportation operator shall advise the web site, affected schools, and RCJTC, and arrange for an alternate vehicle and driver to complete the route, if necessary. The driver and/or transportation operator must make every reasonable attempt to contact the parents/guardians through the pre-established phone net system.